



GAMMA
HIGH VOLTAGE

SM SERIES

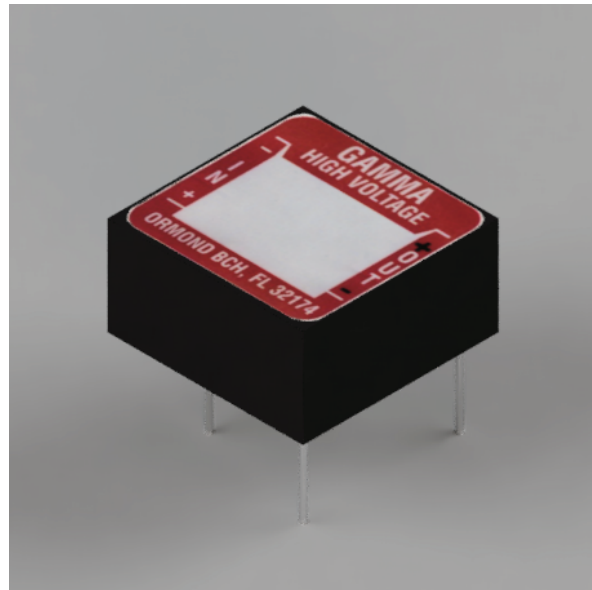
6 MODELS COVERING THE
Range of **250VDC to 3KVDC**

SM SERIES

6 Models covering the range of 250VDC to 3KVDC

FEATURES:

- Low Cost / High Reliability
- Output Proportional to Input
- Input/Output Floating
- High Input/Output Isolation >3500VDC
- Short Circuit And Reverse Polarity Protected
- Compact (.98 Cubic Inch)
- PC Board Mounting
- Operates in 12VDC (Max)
- Fully Encapsulated



APPLICATIONS:

- Ink Jet Printers
- Photo Detectors
- Gas Chromatography
- CRT Focus & Bias
- Geiger Tubes
- Ionization Chambers
- Photomultiplier Tubes

DESCRIPTION:

The GAMMA “SM” Series provides a line of high voltage DC to DC Converters. Their small size and PC Board Mountability make them ideally suited for low current, high voltage applications.

Output Voltage is proportional to the input voltage and is linear from approximately 10% to maximum output voltage. The high Converter frequency allows the low output ripple to be further reduced by the addition of an external output capacitance.

The floating output configuration enables the user to choose either positive or negative output.

Circuit topography permits these units to be customized to meet individual customer requirements

ELECTRICAL CHARACTERISTICS

Input Voltage: 0 to 12VDC
 Input Current: 85mA (F.L) Nominal
 Output Voltage: Proportional to Input (see Model Guide)
 Output Current: (see Model Guide)
 Load Regulation: 5% (½ to full load)
 Ripple: .5% P/P (typical)
 Insulation
 Strength: >3500 VDC Input/output

PHYSICAL CHARACTERISTICS

Dimensions: 1.25" x 1.25" x .63"
 Volume: .98 Cubic Inch
 Weight: Approximately 1.5 oz
 Packaging: Solid Encapsulation
 Terminations: 4PC Pins (0.45 dia matiry holes) (up to 5KV)

ENVIRONMENTAL CHARACTERISTICS

Temperature Range: -20° to +70° C

MODEL GUIDE

MODEL	OUTPUT VOLTAGEE	OUTPUT CURRENT
SM-2.5*	0 TO 250VDC	2mA
SM-5*	0 TO 500VDC	1mA
SM-10*	0 TO 1000VDC	250uA
SM-15*	0 TO 1500VDC	200uA
SM-25*	0 TO 2500VDC	200uA
SM-30*	0 TO 3000VDC	100uA

In addition to standard units, SM units are available at higher power levels in the same size package. Consult Factory

* Please add suffix - RC to part number for RoHS compliant.

PC BOARD MOUNTING

